

GTI MAX

THE BEST HEAVY TRAFFIC FLOORING SOLUTION

gerflor.com



Gerflor[®]
theflooringgroup



GTI MAX ▼

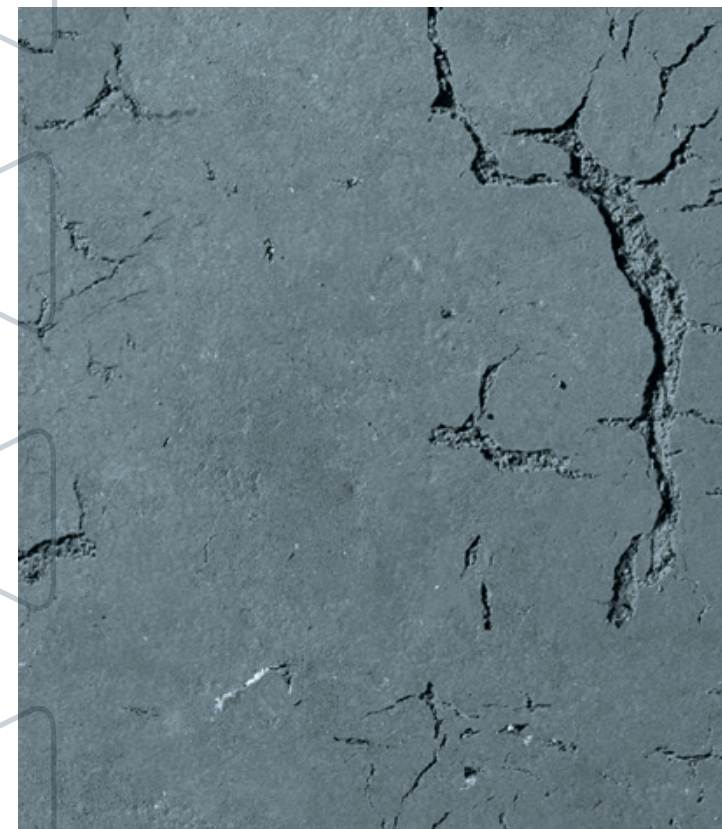
RENOVATION SOLUTION
SOLUTION DE RÉNOVATION
 RENOVIERUNGSLÖSUNG

VCT - ASBESTOS TILES / AMIANTE /
 ALTUNTERGRÜNDE

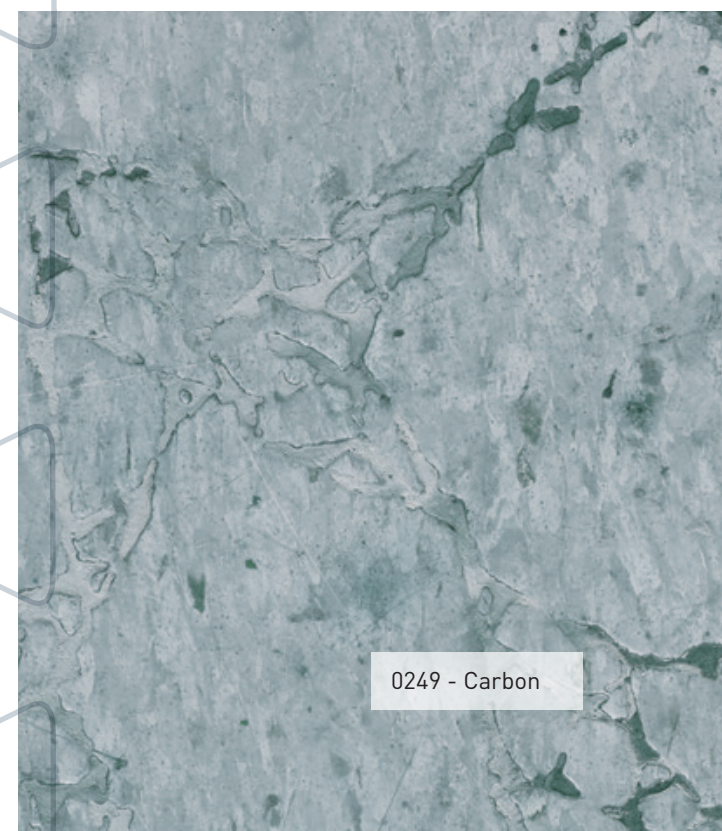


SUPER STRONG
 & NO WELDING

EPOXY / RÉSINE /
 EPOXIDHARZ



0249 - Carbon



0249 - Carbon

CERAMIC TILE / *CARRELAGE* /
 KERAMISCHE FLIESEN

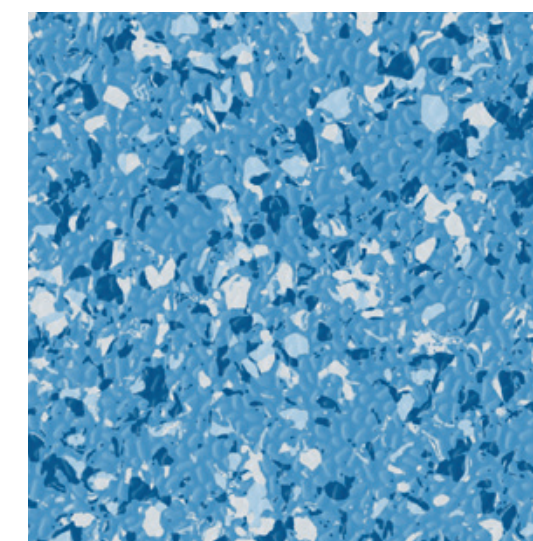
VINYL FLOORING / *SOL COMPACT*
 VINYL / KOMPAKTER VINYL-BODENBELAG



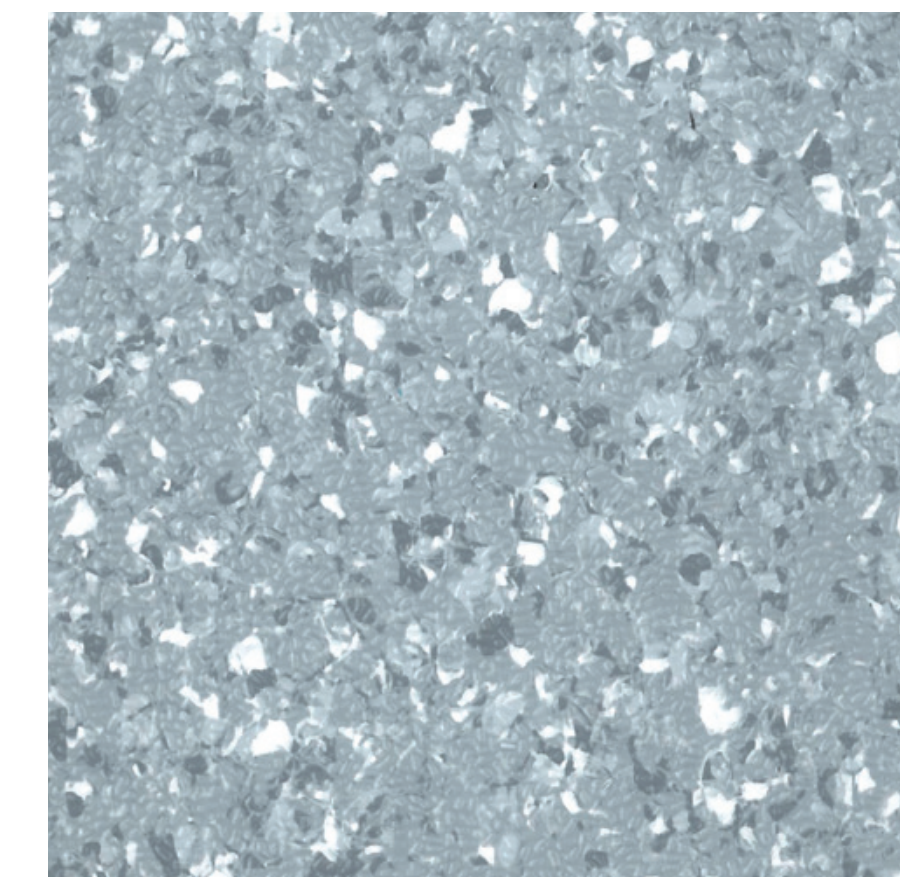
Gerflora®

GTI MAX

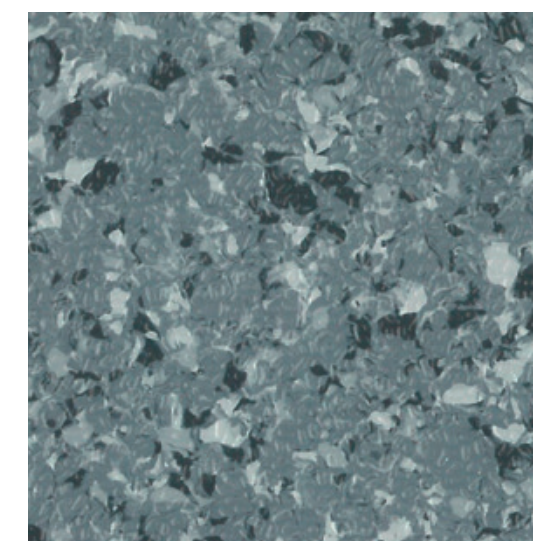
Compact 635 x 635 mm
25" x 25"



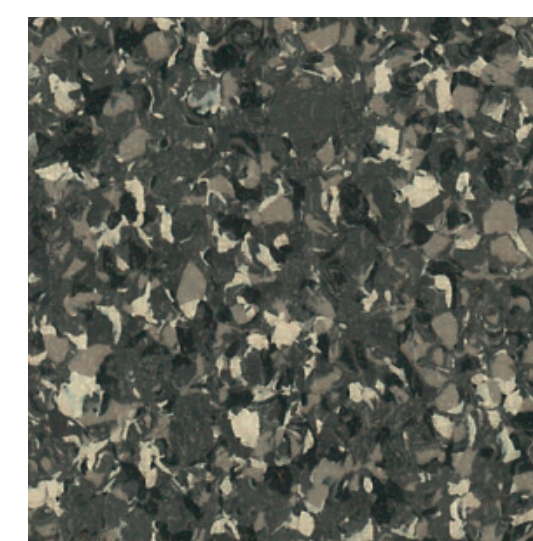
0255 - Saphir R



0253 - Aluminium R



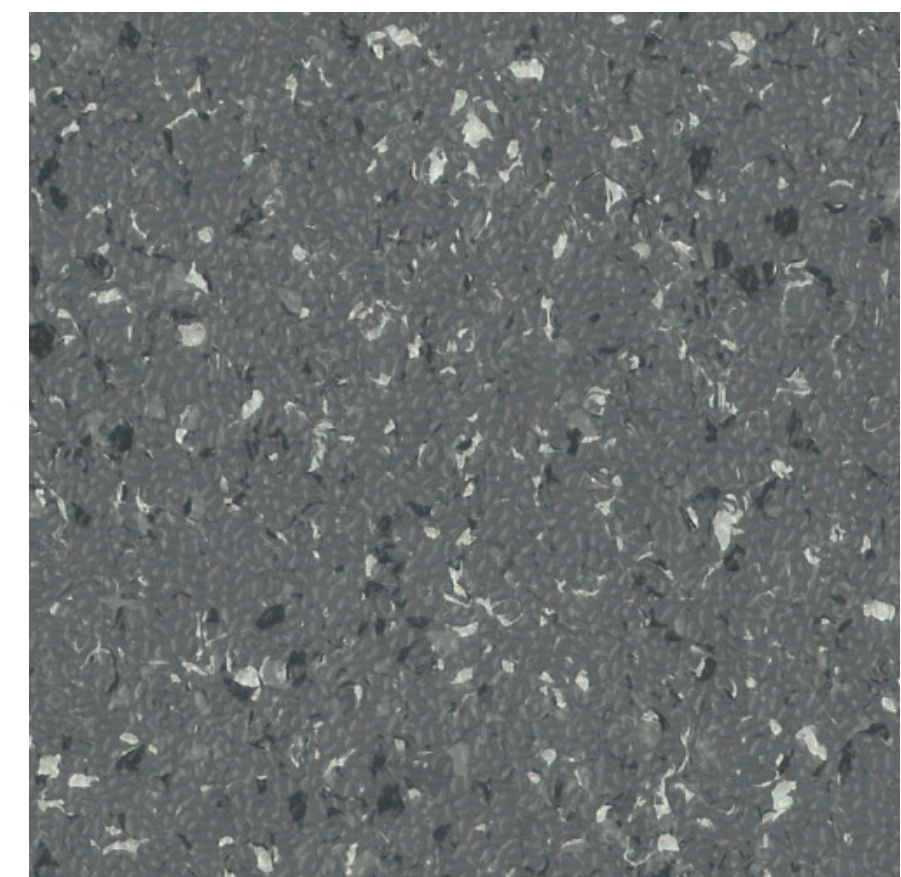
0252 - Titanium R



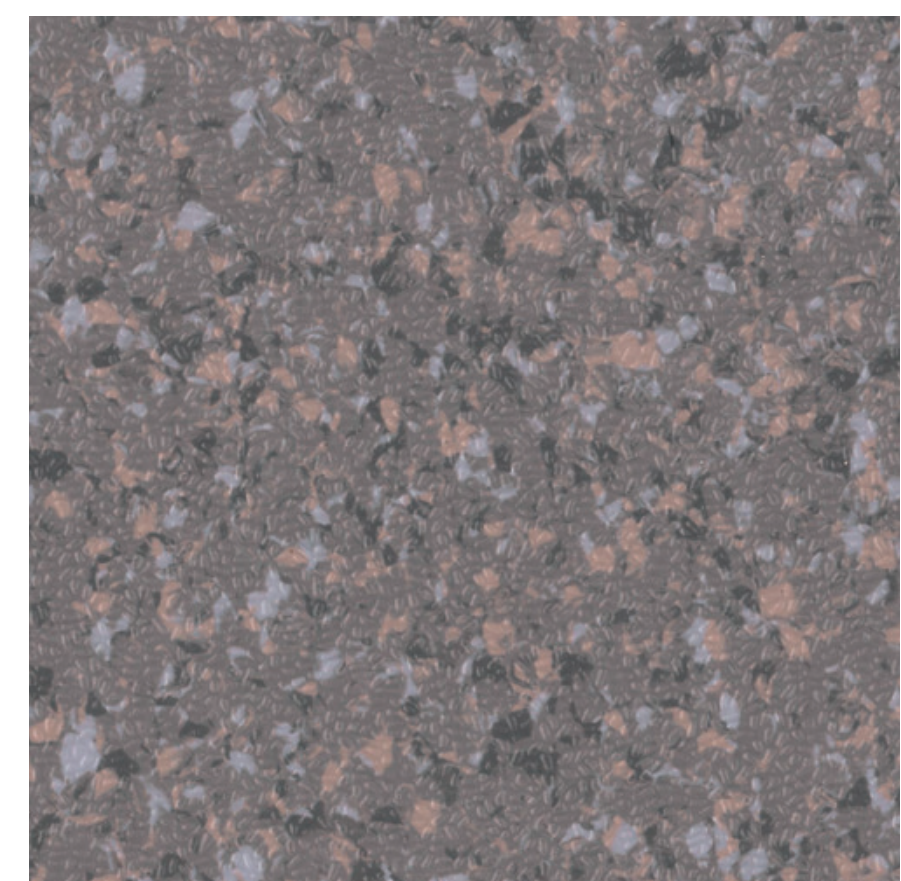
1249 - Tramontana B



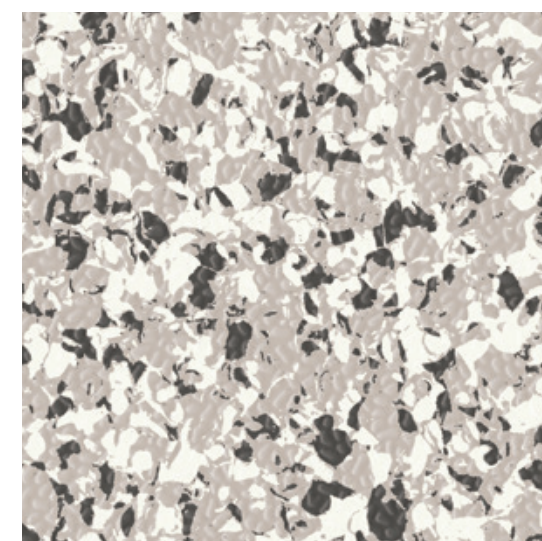
0249 - Carbon R



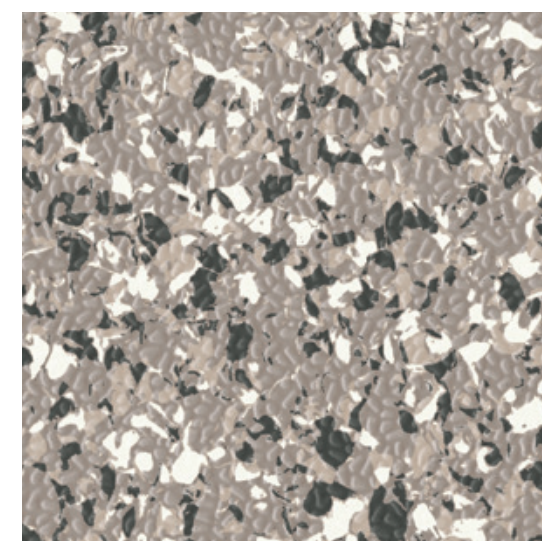
0266 - Peter R



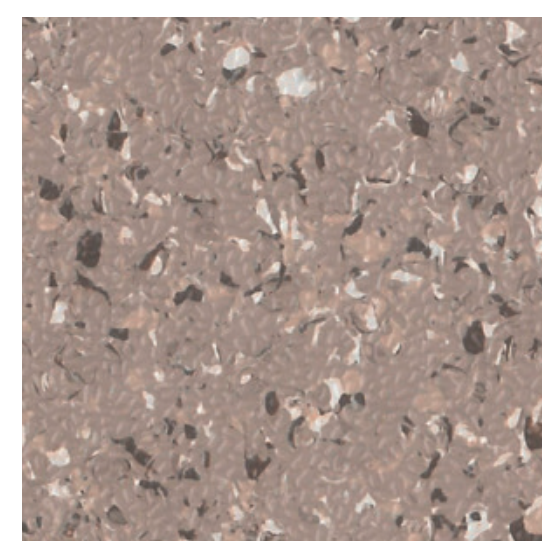
0247 - Magma R



0265 - Maestrale R



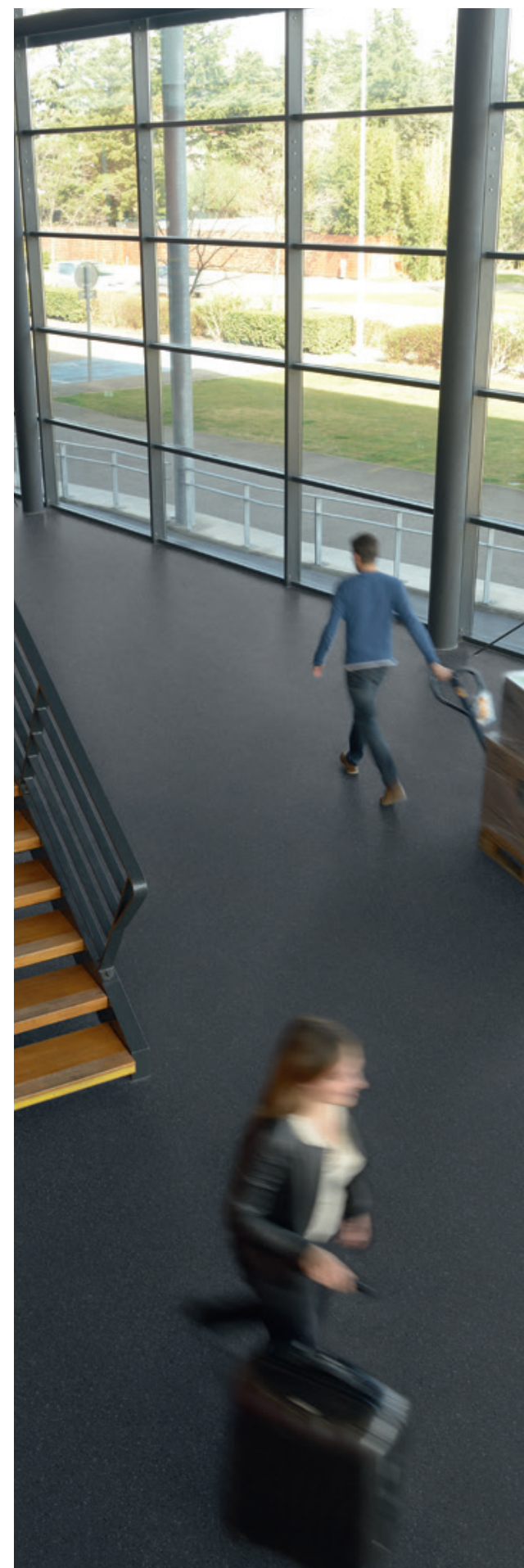
0264 - Ponente R



0267 - Levante R

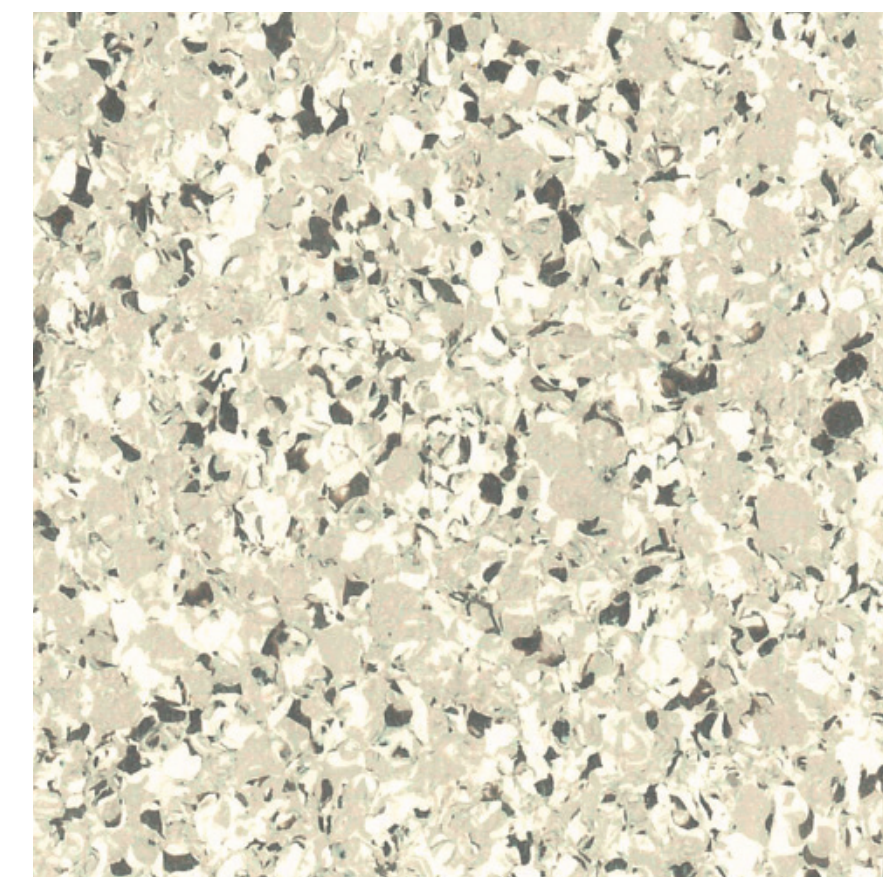
GTI MAX

Compact 635 x 635 mm
25" x 25"

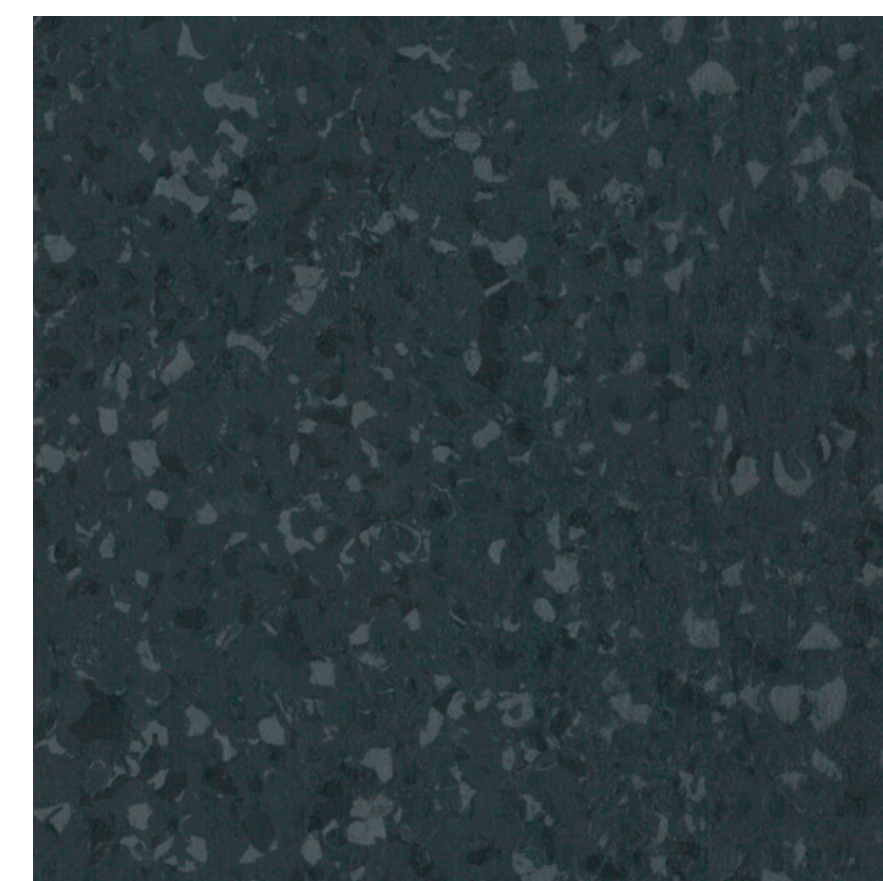


R Rice emboss / Grain de riz / "Reiskorn" Oberflächenprägung

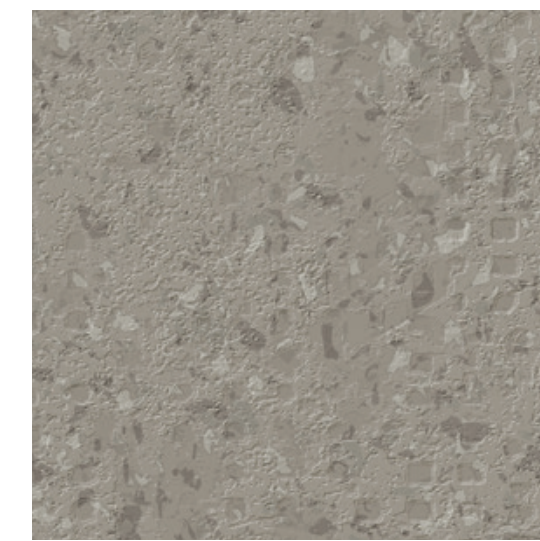
B Concrete emboss / Grain béton / "Beton" Oberflächenprägung



0268 - Ermellino B



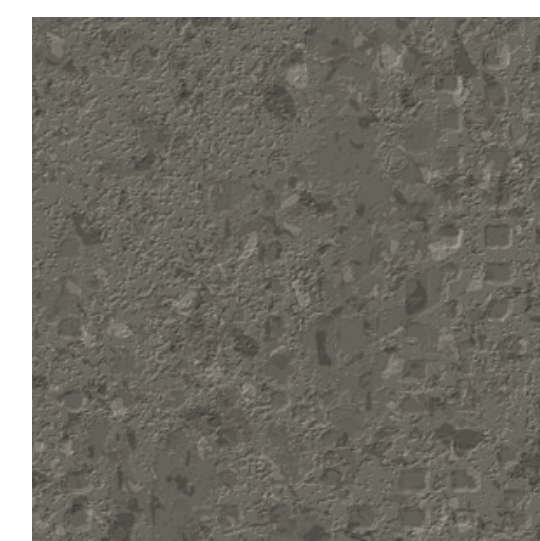
0260 - Ora B



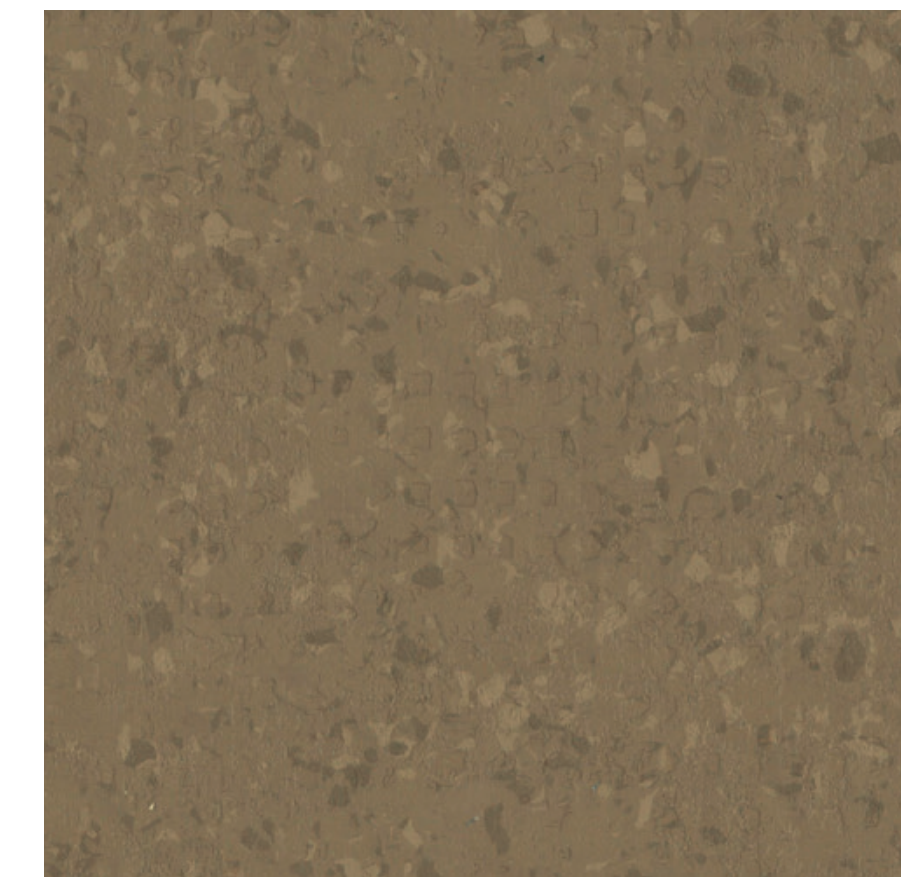
0263 - Bora B



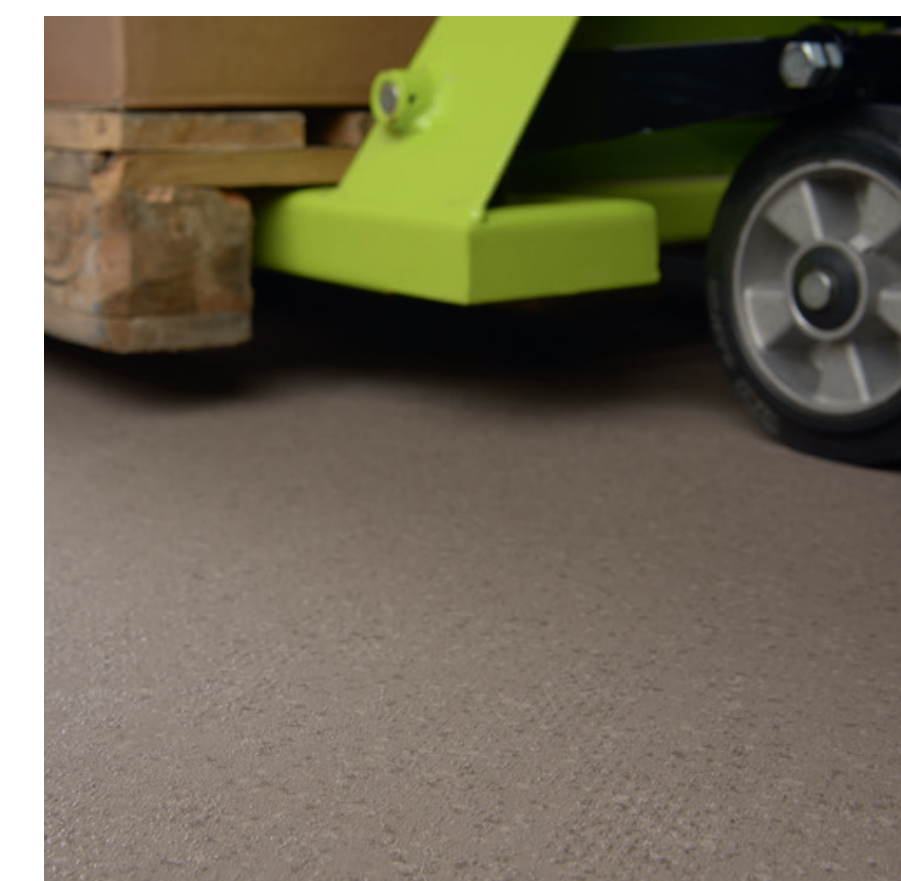
0259 - Grecale B



0262 - Libeccio B



0261 - Scirocco B



GTI MAX

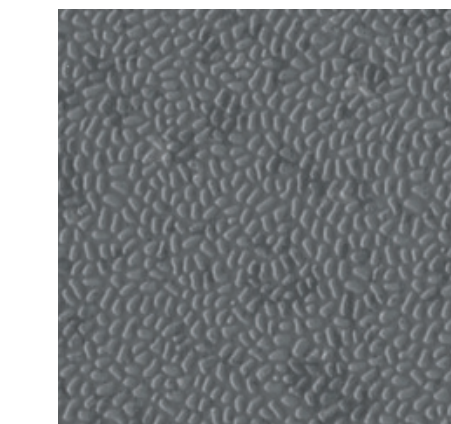
Compact 635 x 635 mm
25" x 25"



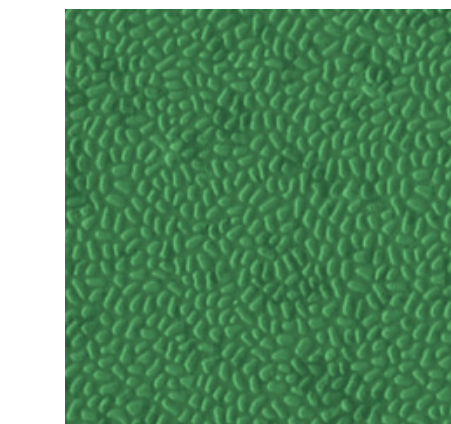
0236 - Black R



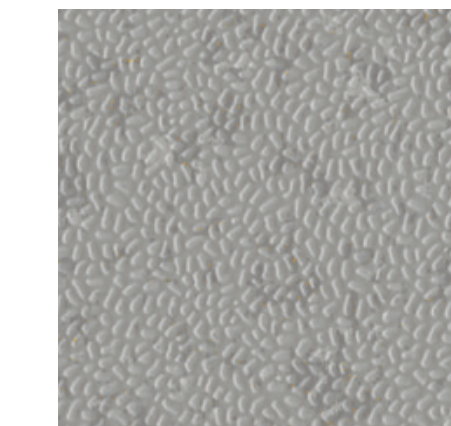
0244 - Yellow R



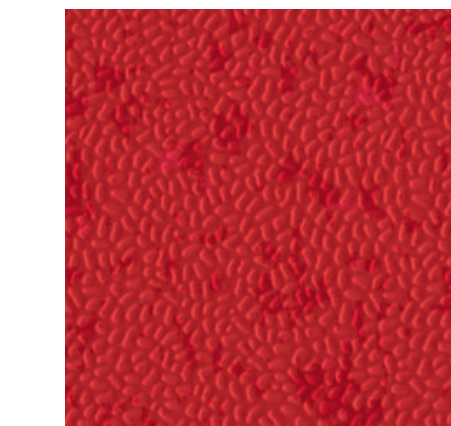
0235 - Dark Grey R



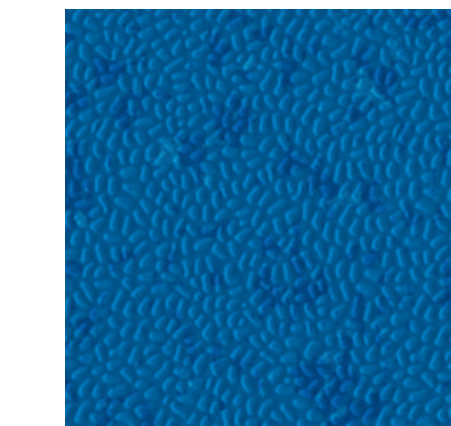
0233 - Green R



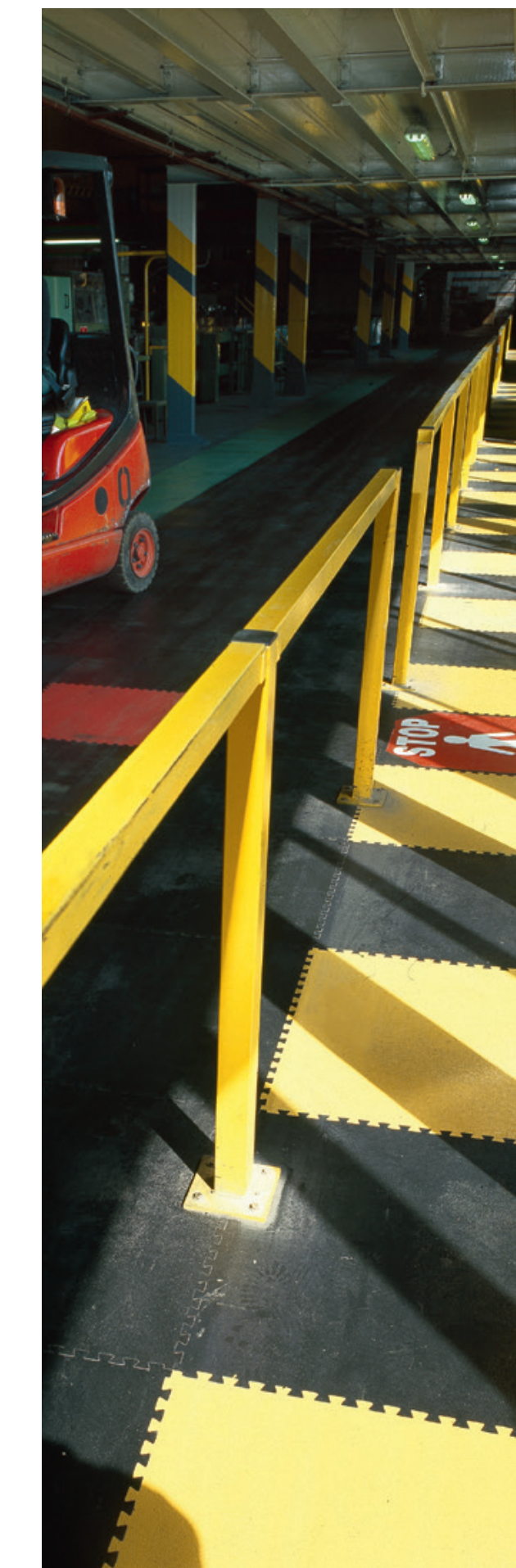
0234 - Clear Grey R



0232 - Red R

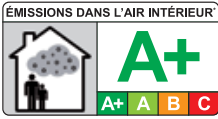


0230 - Blue R



R Rice emboss / Grain de riz / "Reiskorn" Oberflächenprägung

B Concrete emboss / Grain béton / "Beton" Oberflächenprägung



* Information sur le niveau d'émission de substances volatiles dans l'air intérieur, présentant un risque de toxicité par inhalation, sur une échelle de classe allant de A+ (très faibles émissions) à C (fortes émissions)

GTI MAX	
Concrete emboss	Rice emboss

DESCRIPTION / BESCHREIBUNG / BESCHRIJVING / DESCRIPTION / DESCRIPCIÓN / DESCRIÇÃO / DESCRIZIONE / BESKRIVNING / BESKRIVELSE

Total Thickness / Gesamtdicke / Totale dikte / Épaisseur totale / Espesor total / Essesura total / Spessore totale / Total tjocklek / Total tykkelse	EN ISO 24346 [EN 428] ASTM F386-02	mm -	6 1/4"
Thickness of the wearlayer / Dicke der Nuttschicht / Dikte van de slijtlaag / Épaisseur couche d'usure / Espesor capa de uso / Essesura camada de desgaste / Spessore strato di usura / Sliitskiitt tjocklek / Tykkelse sliitesjikt	EN ISO 24340 [EN 429]	mm	2 (0.08")
Weight / Flächengewicht / Gewicht / Poids / Peso / Peso / Vikt / Vekt	EN ISO 23997 [EN 430]	g/m ²	9365 (1.92 lb/st ²)
Size / Format / Afmetingen / Format / Dimensiones / Dimensões / Dimensione / Storlek / Størrelse	EN ISO 24342 [EN 427]	mm	635 x 635 (25" x 25") Connect / 600 x 600 (23.6x23.6") Cleantech TM (without dovetail)

CLASSIFICATION / KLASSIFIKATION / CLASSIFICATIE / CLASSIFICATION / CLASIFICACIONES / CLASSIFICAÇÕES / CLASSIFICAZIONI / KLASSIFICERING / KLASSIFISERING

Norm/Product Specification / Produktnorm / Technische eigenschappen / Norme/Spécification produit / Normas / Normas / Norma prodoto / Norm/Produktspezifikation / Norm	-	-	EN ISO 10582 [EN 649]
European Classification / Europäische Klassifizierung / Europese classificatie / Classement européen / Classificação europeia / Classificação Europeia / Europaklass / Europaklasse	EN ISO 10874 [EN 685]	class	34-43
Classement UPEEC	EN 189	-	U4P4S E2C2
Avis Technique	-	n° AT	12/14-1673
Fire Rating / Brandverhalten / Brand classificatie / Classement Feu / Fuego / Fogo / Reazione al fuoco / Brandklassificering / Brannklassifisering	EN 13501-1 ASTM E648	class -	Br1-s1 Class 1
Static Electrical Propensity / Begehaufladung / Elektrische eigenschappen / Potentiel de charge / Comportamiento electrostático / Comportamento electrostático / Resistenza elettrica / Elektrisk oppladning / Elektrostatisk oppladning	EN 1815	k V	< 2
Slip Resistance Wet / Rutschhemmung / Anti-slip / Glissance humide / Deslizamiento húmedo / Escorregamento húmido / Scivolosità umida / Friktion / Friksjon, våt	DIN 51130/ BGR 181	class	R10
Pendulum test / Glissance - test du pendule	BS 7976	-	HSE 36 compliant ⁽²⁾ -

PERFORMANCES / TECHNISCHE EIGENSCHAFTEN / TESTRESULTAAT / PERFORMANCE / CUALIDADES TÉCNICAS / PERFORMANCES / CARATTERISTICHE TECNICHE / TESTVÄRDEN / TESTVERDIER

Wear Resistance / Verschleißverhalten / Slijtvastheid / Résistance à l'usure / Abrasión / Abrasão / Resistenza all'abrasione / Slitagemotstånd / Sliitestykke	EN 660.2	mm ³	≤ 2
Wear Group / Verschleißgruppe / Groep slijtvastheid / Groupe d'abrasion / Grupo de abrasión / Grupo de abrasão / Gruppo di abrasione / Sliitklass / Sliitjesegruppe	NF 189	group	T
Type Binder content / Bindemittelgehalt / Teneur en agent liant / Contenido en ligante / Conteúdo em ligante / Bindemedelsinnehåll / Bindemiddel innhold	EN ISO 10582	type	I
Dimensional Stability / Maßstabilität / Maatvastheid / Stabilité dimensionnelle / Estabilidad dimensional / Estabilidade dimensional / Stabilità dimensionale / Dimensionsstabilitet / Dimensionsstabilität	EN ISO 23999 [EN 434]	%	≤ 0.15
Residual Indentation / Resteindruck / Indrukbelasting / Poinçonnement statique rémanent / Punzonamiento / Punçoamento / Impronta / Intrycksbeständighet / Intrykksfasthet	EN ISO 24343-1 [EN 433]	mm	≤ 0.10
Castor chair test / Stuhlrollenbeanspruchung / Rotweerstand bureaustoelen / Essai de la chaise à roulettes / Determinación del efecto de una silla con ruedas / Resistência a cadeiras de rodas / Resistenza al passaggio di sed / Tålighet mot rullande stolshjul / Rullende stolhjul (Type W)	ISO 4918 [EN 425]	-	OK
Static Load (250 psi)	ASTM F970	≤ -0.005"	-0.001" (0.25mm) Meets Requirements
Rolling Loads	ASTM F2753	500 cycles at 100 lbs	0.000" Excellent, no change
Dureté Shore D / Shore-Härte D	EN ISO 868	HD	≥ 55
Ripage R2	CAHIER CSTB 3562	N/mm ²	≥ 30
Thermal Conductivity / Wärmeleitfähigkeit / Thermische weerstand / Conductivité thermique / Conductividad térmica / Contutividade térmica / Resistenza termica / Värmeledningsmotstånd / Varmemotstand	EN ISO 10456 [EN12524]	W/(m.k)	0,25
Colour Fastness / Lichtechtheit / Lichtechtheid / Solidité lumière / Resistencia a la luz / Estabilidade das cores / Solidità alla luce / Färgbeständighet / Fargebestandighet	EN 20 105 - B02	degree	≥ 6
Surface Treatment / Oberflächenvergrütung / Oppervlaktebehandling / Traitement de surface / Tratamiento de superficie / Tratamento de superficie / Trattamento di superficie / Ytbehandling / Overflatebehandling	-	-	PUR+
Chemical Products Resistance / Verhalten gegenüber Chemikalien / Chemische bestandigheid / Résistance aux produits chimiques / Resistencia a los productos químicos / Resistência aos produtos químicos / Resistenza ai prodotti chimici / Kemikaliebestandighet / Kjemikaliebestandighet	EN ISO 26987 [EN 423]	-	OK / Beständig gegenüber nicht färbenden alkoholhaltigen Handdesinfektionsmitteln, Haushaltschemikalien und verdünnten Säuren und Laugen bei kurzzeitiger Einwirkung

ENVIRONMENT/INDOOR AIR QUALITY / UMWELT/RAUMLUFTQUALITÄT / ENVIRONNEMENT/QUALITE DE L'AIR INTERIEUR / MEDIO AMBIENTE/CALIDAD INTERIOR DEL AIRE INTERIOR / MEIO AMBIENTE/QUALIDADE DO AR INTERIOR / INNHUSLUFT / EMISJONER

TVOC after 28 days / TVOC (28 Tage) / TVOC (28 dagen) / TVOC après 28 jours / TVOC (28 dias) / TVOC (28 dias) / TVOC (28 giorni) / TVOC (28 dagar) / TVOC (28 dager)	ISO 16000-6	µg/m ³	< 100
Certification / Zertifikat / Certification / Certificado / Certificação / Certifikat / Sertifisering	-	-	Floorscore®

CE MARKING / CE KENNZEICHNUNG / EG CONFORMITEITSMERK / MARQUAGE CE / MARCA DE CONFORMIDAD CE / MARCA DE CONFORMIDADE CE / MARCATURA CE DI CONFORMITA / CE-MÄRKNING / CE MARKING

CE	EN 14041	-	
----	----------	---	--

- (1) Available upon request / Auf Anfrage / Disponible sur demande
 (2) HSE 36 compliant only for 7 references / HSE 36 - Konformität nur für die folgenden Referenzen: / HSE 36 uniquement pour 7 références: Ermellino - Ora - Bora - Libeccio - Grecale - Scirocco - Tramontana

IMPORTANT: The information contained in this document is valid from 01/02/2020 and is subject to change at any time without notice. In the context of constantly changing technology, our customers are responsible, prior to any use, for checking with us that this document is the version in force.

IMPORTANT: Les informations contenues dans ce document sont valables à compter du : 01/02/2020 et susceptibles d'être modifiées à tout moment et sans préavis. L'évolution de la technique étant permanente, il appartient à notre clientèle avant toute mise en œuvre, de vérifier auprès de nos services que le présent document est bien celui en vigueur.

WICHTIG: Die in diesem Dokument enthaltenen Informationen sind gültig ab 01/02/2020 und können jederzeit ohne vorherige Ankündigung geändert werden. Im Rahmen der sich ständig verändernden Technologie sind daher unsere Kunden dafür verantwortlich, vor jedem Gebrauch mit Gerflor zu prüfen, ob dieses Dokument die geltende Version ist.

Be connected!

www.gerflor.com

#Gerflor

GTI MAX: LESS ADHESIVE, MORE RECYCLING

COMPOSITION
100% REACH

INSTALLATION
Adhesive free installation

INDOOR AIR QUALITY
TVOC emissions 10 times better than norms requirements (TVOC <100 µg/m³ after 28 days)

RECYCLED CONTENT
80%

RECYCLABILITY
100% recyclable product

LCA
Eco-designed according to a product specific Life Cycle Analysis